



LAGUNA

Woodworking Machinery 2023

TABLE SAWS

BANDSAWS

SANDERS

LATHES

DUST COLLECTORS

AIR FILTRATION

IGM[®]
Tools & Machinery

Importer and Distributor for the EU

LAGUNA

laguna.igmtools.com



COMMUNITY ACTIVITY

The design of Laguna equipment is inspired by the needs and recommendations of professional woodworkers, creating unique design solutions that woodworking community lacks on today's market. The result is always a professional machine for versatile work in your shop.

SMART FEATURES

The machines are fitted with smart solutions that cover the needs of a modern woodshop. Easy to control robust machines and their precise setup are the basis of every Laguna machine. Thanks to attention to detail and unique features, Laguna has received recommendations from prestigious magazines, the Tool Guide and the Woodworkers Journal.

LAGUNA

PROFESSIONAL DESIGN

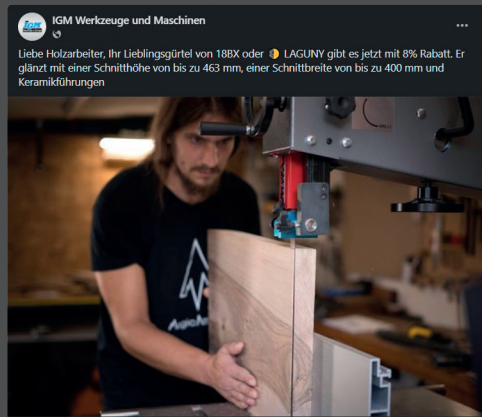
The actual design of Laguna machines began with the help of professional woodworkers in California. Experienced customers suggest unique features that they miss with other machines on the market. The result is always a professional machine for versatile work in your shop.

STABILITY AND STURDINESS

Even from a safety point of view, the stability of a machine is the backbone of precise work. The build of Laguna machines ensures smooth run without vibrations and absolute certainty when working. Robust cast-iron or all steel design is the basis of all Laguna machines.



News, events, contests...
Want to know about all the news and events
before anyone else?



facebook.com/igmtools/



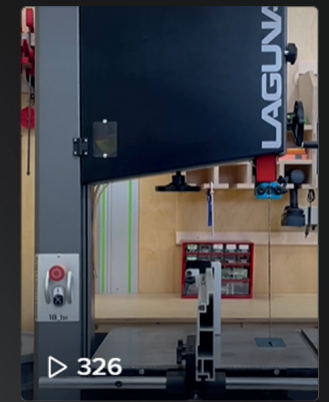
Stories not only about us...
Get familiar with our products
through photos and videos.



instagram.com/igmtools/



Short videos from our workshop
Tools and machines in operation and other videos
from our workshop.



tiktok.com/@igmtools



YouTube

Watch our videos

Product Videos | Workshop Videos | Tutorials & Tips



youtube.com/igmfachshop/



FUSION1 Table Saw

LAGUNA

Code: 151-FUSION1



Supplied with:

- Rip Fence
- Mitre Fence
- Feeder for Small Parts
- Extraction Cover
- Rear Extension
- Carbide Saw Blade (diameter 250/30 mm, Z40)
- Extraction Hose for Extraction Cover

PARAMETERS

Type: **Fusion 1**

Rating: **Craftsman**

Power Output (230 V): **1,1 kW**

Blade DIA x Bore: **250 x 30 mm**

Speed: **3800 rpm**

Blade Tilt: **0–45°**

Max. Depth of Cut at 45°: **50 mm**

Max. Depth of Cut at 90°: **79 mm**

Max. Rip Capacity: **769 mm**

Dust Extraction Outlet: **100 mm**

Table Size: **508 x 792 mm**

Dimensions (L x W x H): **1550 x 1405 x 1100 mm**

Weight: **110 kg**



Compatible with CMT Grooving
Saw Blade Set DADO



FUSION1 Table Saw

Technical Details

The Laguna Fusion 1 impresses with its large work table, which is mostly made of cast-iron and the side extensions of the table are made of thick-walled steel sheet with a high-quality, abrasion-resistant finish.

Despite the lower power on paper, this saw can also handle longitudinal and transverse cuts of hardwood up to 79 mm thick. Thanks to the low power consumption and the standard 230V connection, a standard household power supply with a 13A circuit breaker is sufficient to connect this saw.

A DADO Grooving Saw Blade Set with a clamping hole of 15.87 mm (5/8") can be used with the Table saw.

The main cast-iron part of the table features two T-slots for mitre fence on both sides of the blade. The Fusion 1 comes with an additional 500mm rear table extension, which you will appreciate when cutting longer parts. The saw includes a solid longitudinal ruler with a soft plastic handle. The ruler can be easily moved and locked in selected position. Thanks to the magnifying glass on the longitudinal ruler, the scale on the aluminium guide profile is always easy to read and allows you to work with perfect precision. The aluminium profile of the longitudinal ruler can be flipped 90 degrees for easier cutting of thin parts.

The Fusion 1 is an excellent solution for those looking for a small, compact, and at the same time accurate and high-quality table saw to get started. Perfect for hobbyists, model makers or beekeepers. This saw will certainly be making perfect cuts for years to come.

The metal control wheels with anti-swivel lock ensure easy and precise saw blade tilting from 0° to 45° and saw blade lifting up and down according to your needs. The saw has an ingenious dust extraction from the bottom and from the upper extraction cover of the saw blade. The dust extraction located in the saw blade cover provides a clean working surface for accurate and comfortable cutting. Comes fitted with a 100 mm dust extraction outlet.

The saw features smart design. E.g. a quick clamping mechanism of the riving knife or a stop mechanism that locks the shaft for easy removal of the blade. There is handy tool storage on the side of the base for rip fence, mitre fence and arbor wrench and material feeder, so you'll always have them at hand.

The robust motor suspension provides stability during work and guarantees a perfect cut. The replacement zero clearance throat plate in the cast iron table is suitable for all cutting angles, from 0° to 45°. This plate is easily removable by means of an eccentric lock and is equipped with adjustable screws for precise alignment with the table plane.

Comes partially assembled in a transport crate. Assembly time is approximately 1 hour.

Available Accessories



Extension of the cutting width to 1320 mm

Code: 151-Fusion52



Riving Knife

Code: 151-Fusion3-27



Replacement Zero Clearance Plate

Code: 151-FusionTP



Fusion1 Wheel System

Code: 151-Fusion1WS



Dado throat plate for Fusion

Code: 151-FusionDado



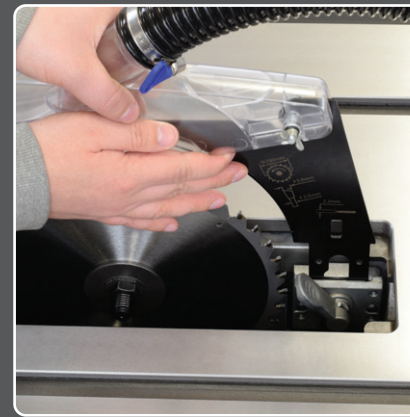
Saw blades and other machine accessories can be found at www.igmttools.com



Cast-Iron Table with a Rip Fence



Handy Parts Storage



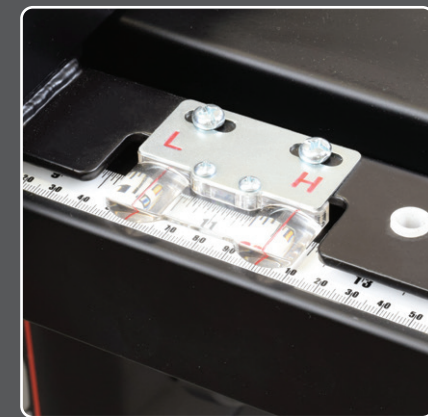
Quick-Clamping Mechanism



Lever for a Quick Blade Swap



Blade Tilt and Height Control



Magnifying glass on the longitudinal ruler

FUSION2 mod.2022 Table Saw

LAGUNA

Code: 151-FUSION2



Supplied with:

- Rip Fence
- Mitre Fence
- Feeder for Small Parts
- Extraction Cover
- Rear Extension
- Carbide Saw Blade (diameter 250/30 mm, Z40)
- Extraction Hose for Extraction Cover

PARAMETERS

Type: **Fusion 2 mod.2022**

Rating: **Professional**

Power Output (230 V): **1,2 kW**

Blade DIA x Bore: **250 x 30 mm**

Speed: **3800 rpm**

Blade Tilt: **0-45°**

Max. Depth of Cut at 45°: **56 mm**

Max. Depth of Cut at 90°: **79 mm**

Max. Rip Capacity: **914 mm**

Dust Extraction Outlet: **100 mm**

Table Dimensions: **1118 x 792 mm**

Dimensions (L x W x H): **1663 x 1652 x 1081 mm**

Weight: **129,8 kg**



**Compatible with CMT Grooving
Saw Blade Set DADO**

FUSION2 mod.2022 Table Saw

Technical Details

The first thing that will catch your attention is the large cast-iron table. The table provides plenty of room for sizing of larger pieces. A rugged rip fence slides easily on the surface of the saw and comes fitted with a soft plastic handle that securely locks the fence in any position. The adjustable scale is easy to read thanks to a magnifier. You can flip the aluminium profile of the fence for thinner operations by 90 degrees. The magnifying glass has two lines, one showing the distance of the blade from the fence profile, which is in the standard vertical position, and the other showing the distance of the blade if the ruler profile is rotated 90° to a horizontal position. The table features two handy T-slots for the mitre fence on both sides of the blade.

The cast-iron control wheels with a foldable handle and a lock provide light and precise tilt of the blade up to 45° as well as up and down travel. The saw is equipped with a precise digital saw blade angle indicator with a backlit display, which is built into the saw body on the front. Clever design allows dust extraction from the bottom of the saw and the blade. Comes fitted with a 100 mm dust extraction outlet.

The saw is powered by a 1200 W motor. Cast-iron trunnion provides stability and perfect cut at all times. A DADO Grooving Saw Blade Set with a clamping hole of 15.87 mm (5/8") can be used with the Table saw. Thanks to the zero clearance insert plate, you can size at 0° to 45°. You can easily remove the insert plate using the handy quick-lock, the plate also comes fitted with worm screws for flush adjustments.

The Fusion 2 features smart design. E.g. the quick clamping mechanism of the riving knife or a stop mechanism that locks the shaft for easy removal of the blade. You can move the saw around your shop thanks to two lockable wheels. Storage around the cabinet of the saw allows clever storing of the rip fence, mitre fence or feeder.

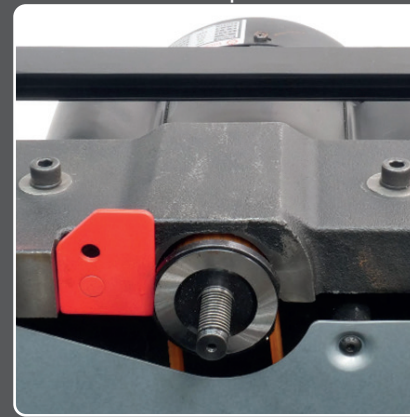
Comes partially assembled in a transport crate. Assembly time is approximately 1 hour.



Digital saw blade angle indicator with Robust Rip Fence



Handy Parts Storage



Robust cast iron engine suspension



Lever for a Quick Blade Swap

Available Accessories



Width of Cut Extension to: 1320 mm

Code: 151-Fusion52



Riving Knife

Code: 151-Fusion3-27



Replacement Zero Clearance Plate

Code: 151-FusionTP



CMT Grooving Saw Blade Set DADO PRO

Code: C23031208



Dado throat plate for Fusion

Code: 151-FusionDado



Saw blades and other machine accessories can be found at www.igmttools.com



Digital saw blade angle indicator



Magnifying glass on the longitudinal ruler

FUSION3 mod.2022 Table Saw

LAGUNA

Code: 151-FUSION3Dro



Supplied with:

- Rip Fence
- Mitre Fence
- Feeder for Small Parts
- Extraction Cover
- Rear Extension
- Carbide Saw Blade (diameter 250/30 mm, Z40)
- Extraction Hose for Extraction Cover

PARAMETERS

Type: **Fusion 3 mod.2022**

Rating: **Professional**

Power Output (230 V): **2,1 kW**

Blade DIA x Bore: **250 x 30 mm**

Speed: **3800 rpm**

Blade Tilt: **0-45°**

Max. Depth of Cut at 45°: **56 mm**

Max. Depth of Cut at 90°: **79 mm**

Max. Rip Capacity: **914 mm**

Dust Extraction Outlet: **100 mm**

Table Size: **1118 x 792 mm**

Dimensions (L x W x H): **1663 x 1575 x 1081 mm**

Weight: **150,4 kg**



Compatible with CMT Grooving
Saw Blade Set DADO



FUSION3 mod.2022 Table Saw

Technical Details

The first thing that will catch your attention is the large cast-iron table. The table provides plenty of room for sizing of larger pieces. Fusion 3Dro Table Saw comes equipped with a rear table that enlarges the main table by 500 mm.

A rugged rip fence slides easily on the surface of the saw and comes fitted with a soft plastic handle that securely locks the fence in any position. The adjustable scale is easy to read thanks to a magnifier. You can flip the aluminium profile of the fence for thinner operations by 90 degrees. The magnifying glass has two lines, one showing the distance of the blade from the fence profile, which is in the standard vertical position, and the other showing the distance of the blade if the fence profile is rotated 90° to the horizontal position. The table features two handy T-slots for the mitre fence on both sides of the blade.

The cast-iron control wheels with a foldable handle and a lock provide light and precise tilt of the blade up to 45° as well as up and down travel. The saw is equipped with a precise digital saw blade angle indicator with a backlit display, which is built into the saw body on the front. Clever design allows dust extraction from the bottom of the saw and the blade. Comes fitted with a 100 mm dust extraction outlet.

The saw is powered by a strong 2100 W motor. Cast-iron trunnion provides stability and perfect cut at all times. Thanks to the zero clearance insert plate, you can size at 0° to 45°. You can easily remove the insert plate using the handy quick-lock, the plate also comes fitted with worm screws for flush adjustments. A DADO Grooving Saw Blade Set with a clamping hole of 15.87 mm (5/8") can be used with the Table saw.

The Fusion 3 features smart design. E.g. the quick clamping mechanism of the riving knife or a stop mechanism that locks the shaft for easy removal of the blade. You can move the saw around your shop thanks to two lockable wheels. Storage around the cabinet of the saw allows clever storing of the rip fence, mitre fence or feeder.

Comes partially assembled in a transport crate. Assembly time is approximately 1 hour.

Available Accessories



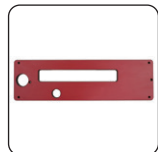
Width of Cut Extension to: 1320 mm

Kód: 151-Fusion52



Replacement Zero Clearance Plate

Kód: 151-FusionTP



Dado throat plate for Fusion

Kód: 151-FusionDado



Riving Knife

Kód: 151-Fusion3-27



CMT Grooving Saw Blade Set DADO PRO

Kód: C23031208



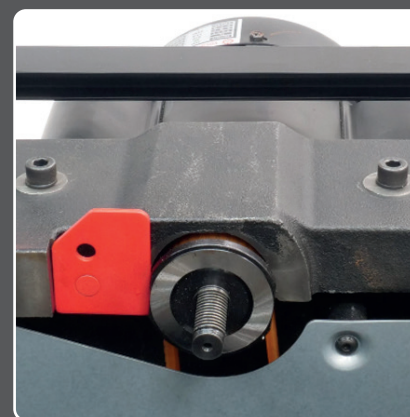
Saw blades and other machine accessories can be found at www.igmttools.com



Cast-Iron Table with a Rip Fence



Handy Parts Storage



Robust cast-iron engine suspension



Lever for a Quick Blade Swap



Digital saw blade angle indicator



Magnifying glass on the longitudinal ruler

1412 Bandsaw

LAGUNA

Code: 151-1412



Supplied with:

- Parallel Fence
- Stand
- Bandsaw Blade IGM Carbon FORCE REGULAR - 13 x 0,65mm 6Tpi

PARAMETERS

Type: **1412**

Rating: **Professional**

Power Output (230 V): **1,3 kW**

Worktop: **406 × 546 mm**

Blade Length: **2946 mm**

Blade Width min. / max.: **3 / 19 mm**

Blade Speed: **965 m/min.**

Max. Height of Cut: **305 mm**

Max. Width of Cut to Fence: **310 mm**

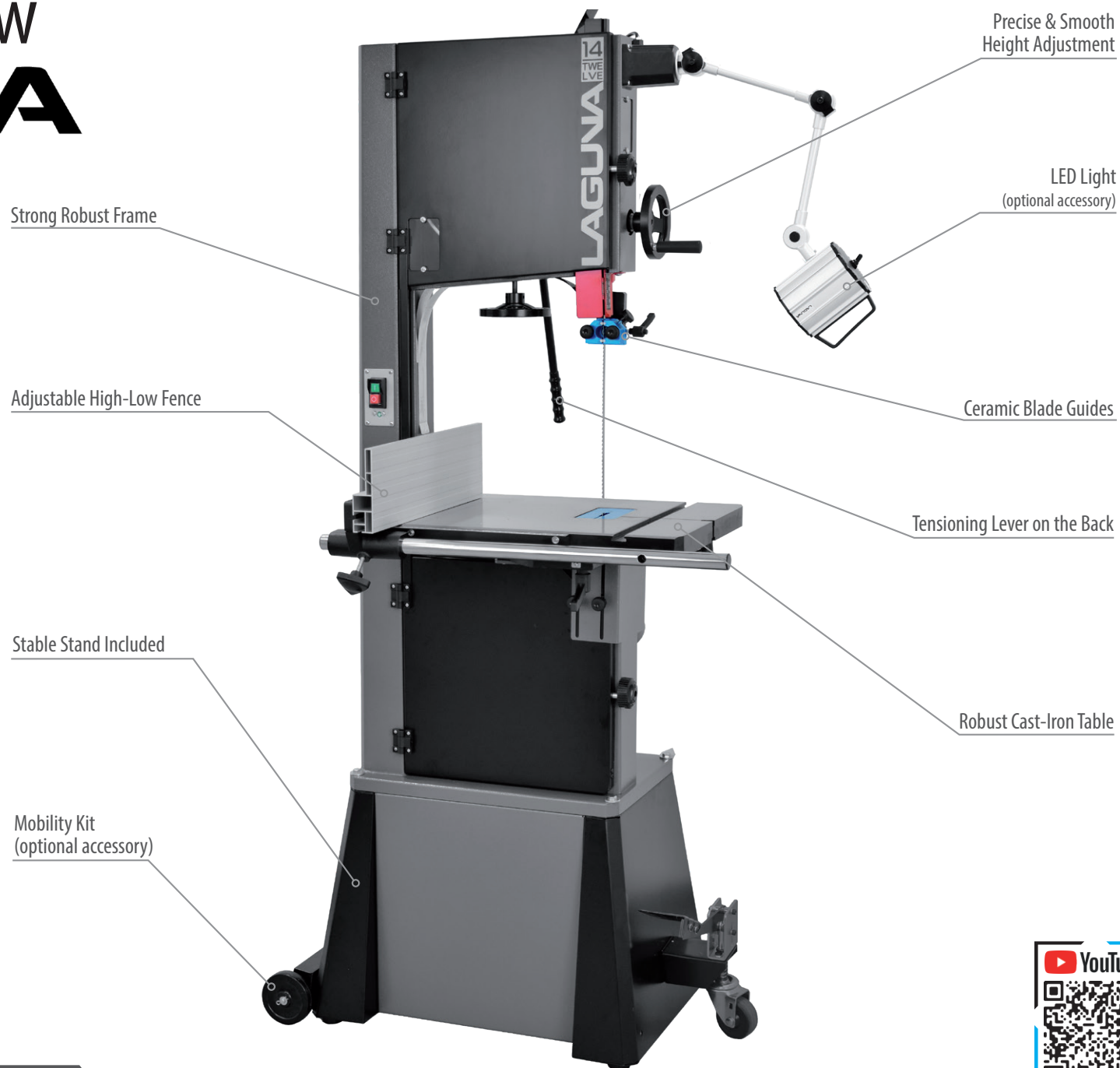
Max. Width of Cut to Column: **350 mm**

Table Tilt: **-7° to +45°**

Dust Extraction Outlet: **100 mm**

Length x Width x Height: **800 × 683 × 1784 mm**

Weight: **117 kg**



1412 Bandsaw

Technical Details

Ideal for professional woodshops that require accuracy and strong cutting power.

The main feature of the IGM Laguna 1412 Table Saw is a triangular frame and a strong 1,2 kW motor. The micro-polished cast-iron worktop (406 x 546 mm) provides stability even for oversized workpieces. The table also tilts from -7° to +45°. The robust fence is easily adjustable and can be installed into two positions (vertical and horizontal). The solid cast-iron wheels are fitted with polyurethane tyres. The tyres are designed to withstand heat and offer longer service life than regular rubber tyres. The worm gear & pinion on the blade guard is ultra-smooth and engineered to have minimum flex even when fully extended.

The saw comes with ceramic guides on the upper and lower wheel for precise tracking of the saw belt. These slides provide excellent cut control and prolong the service life of the belt. See-through windows on the upper wheel allow you to check for proper tracking and tension of the belt. A lever on the backside of the bandsaw allows for quick tensioning and release of the belt. The IGM Laguna 1412 stands out amongst other machines especially for its clever design that allows cuts up to 305 mm.

The bandsaw is fitted with all CE required safety features.
Comes partially assembled in a cardboard box. Assembly time is approximately 1 hour.

Available Accessories

Bandsaw blades **IGM**

TOP QUALITY

www.igmttools.com



Mobility Kit for 1412-14BX-1216
Code: 151-1412MBA



LED Chameleon 95CRI Light
Code: 151-ALEDLATHE



LED SpinLock Lamp
Code: 151-ALEDSPINE



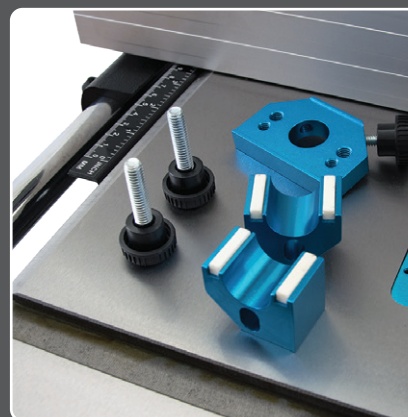
LED Chameleon 90CRI Light
Code: 151-ALEDMACH



Table Tilt -7° to +45°



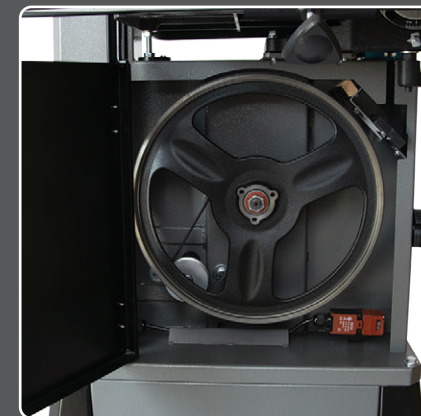
Height of Cut 305 mm



Ceramic Blade Guides



Balanced Cast-Iron Wheels



Lower Wheel Fitted with a Dust Brush

14BX / 18BX Bandsaw

LAGUNA

Code: 151-14BX / 151-18BX



Supplied with:

- Parallel Fence
- 14BX: Bandsaw Blade IGM Carbon FORCE REGULAR - 13 x 0,65mm 6Tpi
- 18BX: Bandsaw Blade IGM Carbon FORCE HOOK - 16 x 0,8mm 4Tpi

PARAMETERS

Type:	14BX	18BX
Rating:	Professional	Professional
Power Output (230 V):	1,9 kW (230V)	2,2 kW (400V)
Worktop:	406 × 546 mm	508 × 660 mm
Blade Length:	2946 mm	3695 mm
Blade Width min. / max.:	3 / 19 mm	3 / 31 mm
Blade Speed:	965 m/min.	965 m/min.
Max. Height of Cut:	346 mm	410 mm
Max. Width of Cut to Fence:	310 mm	400 mm
Max. Width of Cut to Column:	350 mm	460 mm
Table Tilt:	-7° to +45°	-6° to +45°
Dust Extraction Outlet:	100 mm	100 mm
Length x Width x Height:	713 × 755 × 1790 mm	759 × 919 × 1975 mm
Weight:	123 kg	186 kg

Strong Robust Frame

Tensioning Lever on the Back

Adjustable High-Low Fence

Precise & Smooth Height Adjustment

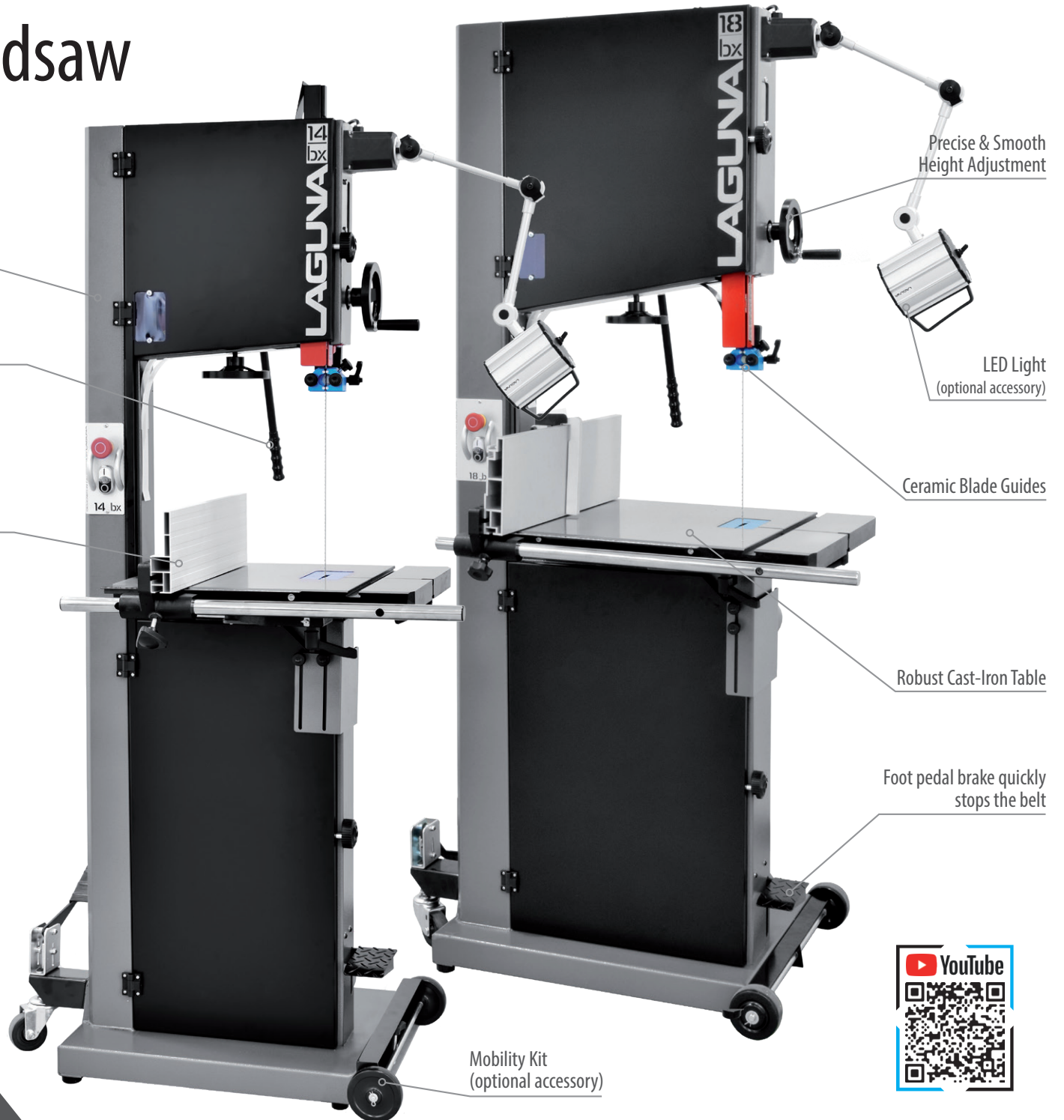
LED Light (optional accessory)

Ceramic Blade Guides

Robust Cast-Iron Table

Foot pedal brake quickly stops the belt

Mobility Kit (optional accessory)



14BX / 18BX Bandsaw

Technical Details

This bandsaw is ideal for a professional woodshop that requires accuracy and high-quality cutting power.

The IGM Laguna 14BX / 18 BX Bandsaw features a heavy robust frame with a powerful 1,9 / 2,2 kW motor. The ground cast alloy worktop provides stability even for oversized workpieces. The table also tilts from -7° to +45°.

The robust fence is easily adjustable and can be installed into two positions (vertical and horizontal). The strong cast alloy wheels are fitted with a polyurethane belt along the whole wheel. The belt is designed to withstand heat and for a longer service life than regular rubber belts. The worm gear & pinion on the blade guard is ultra-smooth and engineered to have minimum flex even when fully extended. Pressing the foot pedal firstly cuts power to the motor and secondly activates the disc brake to bring the saw to a virtually instantaneous stop.

Fitted with ceramic guide system above and below worktop. Ceramic guides guide the blade accurately while securing ideal cut quality and prolonging the life of your belt. Double windows allow you to check both tension & tracking while the machine is running. A lever on the backside of the saw allows for quick tensioning and release of the belt. The IGM Laguna 14BX / 18 BX stands out amongst other machines especially for its clever design that allows cuts up to 346 / 410 mm.

The band saw is fitted with all CE required safety features. Comes partially assembled in a transport crate. Assembly time is approximately 1 hour.

Available Accessories

Bandsaw blades **IGM**

TOP QUALITY

www.igmttools.com



Mobility Kit for 1412-14BX-1216
Code: 151-1412MBA



LED Chameleon 95CRI Light
Code: 151-ALEDLATHE



Mobility Kit for Bandsaw 18BX
Code: 151-18bxMBA



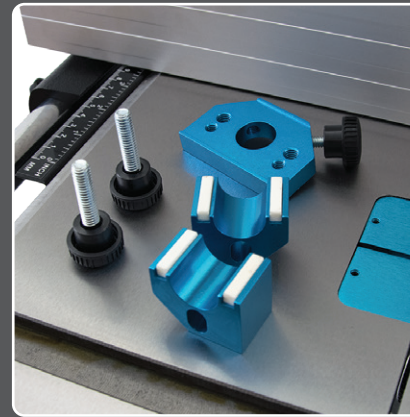
LED Chameleon 90CRI Light
Code: 151-ALEDMACH



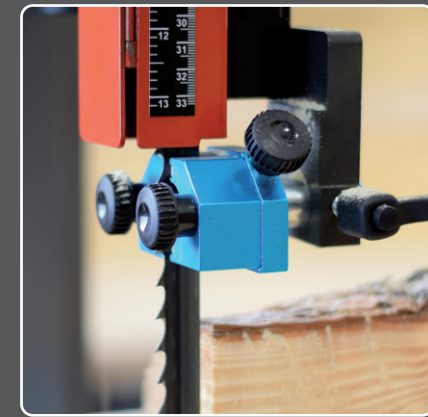
Table Tilt -7° - +45° / -6° - +45°



Height of Cut 346 / 410 mm



Ceramic Blade Guides



Balanced Cast-Iron Wheels



Foot pedal brake quickly stops the belt

1632 / 1938 SuperMax Drum Sander

LAGUNA

Code: 151-1632 / 151-1938



Supplied with:

- Stand
- Abrasive, 80G

Turbo Vented Dust Port increases air-flow to dust collectors by 15%

Intellisand Technology automatically adjusts the feed speed

Micro-setting

Quick drum adjustment lever

Built-in Digital Thickness Read Out

Stand Included

PARAMETERS

Type:	1632 SuperMax	1938 SuperMax
Rating:	Professional	Professional
Power (230 V):	1,1 kW	1.35 kW
Conveyor Belt Motor:	40 W	40 W
Speed:	1420 rpm	1400 rpm
Drum Size:	127 mm	127 mm
Feed Speed:	0–3 m/min.	0–3 m/min.
Thickness of Material min./max.:	0,8–76 mm	0,8–100 mm
Workpiece Width:	406 (812) mm	486 (965) mm
Width of Abrasive:	76 mm	
Dust Extraction Outlet:	100 mm	100 mm
Minimum dust collector capacities:	1000 m ³ /h	1000 m ³ /h
Length x Width x Height:	860 × 560 × 1220 mm	1054 x 670 x 1295 mm
Weight:	62 kg	110 kg



1632 / 1938 SuperMax Drum Sander

Technical Details

Drum Sander designed by the woodworking community. Featuring innovative solutions professionals were lacking on modern sanding machinery.

One of them is a quick and accurate height adjustment. Allows full height adjustments, with one pull of a lever versus 48 revolutions of a hand wheel, greatly reducing set-up time and increasing productivity. Built-in Digital Read Out helps maintain consistent thicknesses to increase accuracy and output quality.

Sanding accuracy guaranteed by robust drum housing and perfect parallel setting between the conveyor and the drum. Just one nut adjusts the conveyor to parallel the sanding head, making aligning the conveyor to the sanding head quick and easy. Conveyor motor is placed on the back of the saw providing pulling motion instead of pushing.

Intellisand Technology automatically adjusts the feed speed to provide consistent finish even with varying grain pattern and density. Meaning no burning, rip-out or damaging the workpiece. A newly designed Turbo Vented Dust Port increases air-flow to dust collectors by 15%.

Designed by professionals for demanding work, smooth operation, narrow and wide workpieces, precise sanding and quick setup.

Available Accessories



Drum Sander Folding Infeed/Outfeed Tables

Code: 151-1632FT
Code: 151-1938FT



Conveyor Belt

Code: 151-1632-015
Code: 151-1938-038



Casters Set for Sanders 1632/1938

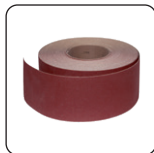
Code: 151-1938-CS



Abrasive Roll Cloth 76 mm x 25 m antistatic

Grit: 60, 80, 100, 120, 150 a 180

Code: M401-725



Abrasive Roll Cloth 76 mm x 25 m standard

Grit: 60, 80, 100, 120, 150 a 180

Code: M402-725

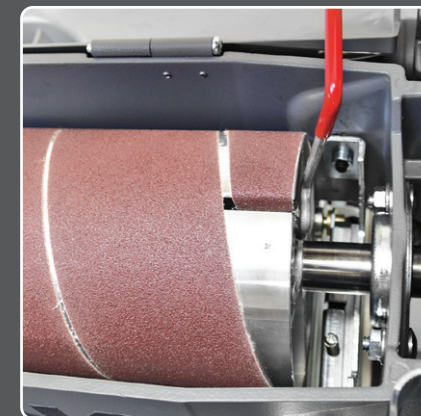


Stick Abrasive Cleaner

Code: MCBP



Wrenches always at hand



Simple Replacement of the Abrasive



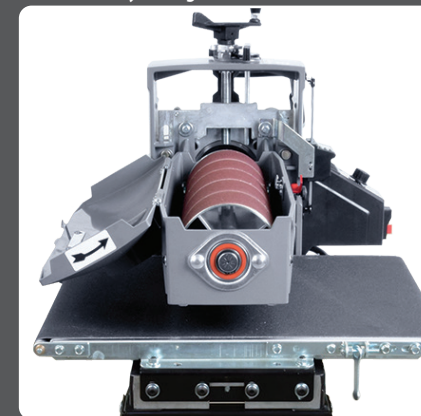
Built-in Digital Thickness Read Out



Index lever will properly adjust the conveyor to give a seamless finish



Extends your worktop to 110 cm



Easy access to drum

Revo 1216 Woodturning Lathe

LAGUNA

Code: 151-1216



Supplied with:

- Spindle Centre
- Live Centre
- Faceplate
- Toolrest
- Knockout Rod
- Spanner for Spindle Stop

PARAMETRY

Type: **REVO 1216**

Rating: **Professional**

Power Output (230 V): **750 W**

Speed Range: **50–525, 325–1750,
650–3500 rpm**

Swing over Bed: **310 mm**

Distance between Centres: **390 mm**

Spindle Thread: **M33 × 3,5 mm**

Spindle/Tailstock Taper: **MK2 / MK2**

Headstock/Tailstock Bore: **9,5 / 9,5 mm**

Quill Travel: **63 mm**

Toolrest Post Size: **25,4 mm (1")**

Length x Width x Height: **750 × 226 × 442 mm**

Weight: **56,3 kg**

Ergonomic control panel from eloxed aluminium and a designed dural speed control

Expansion Set 254 mm (optional accessories)

Handy adjustable shelf for chisels and tools

Mobility Kit (optional accessories)

LED Light (optional accessories)

Tailstock with storage

Wide ground steel bed

Powerful motor with high torque even in low-speed settings

Expansion Set 254 mm (optional accessories)

Cast-iron headstock and bed

Adjustable Stand (optional accessories)

Turning chisels



Revo 1216 Woodturning Lathe

Technical Details

Midi-lathe Laguna 1216 features a robust design including a cast-iron headstock, tailstock, perfectly ground bed and a toolrest with a hardened steel edge.

One of the striking features of the lathe is an ergonomic control panel from eloxed aluminium and a designed dural speed control. The lathe operates in three-speed ranges 50-525, 325-1750, 650-3500 rpm. The speed is smoothly controlled with a dural control wheel and the gears can be changed with a clever one-lever mechanism. Pulse width modulation technology keeps high-torque even at low rpm.

Tailstock lock handle is positioned on the backside of the lathe. Ergonomically designed handles use excentre locking for strong hold.

Can be equipped with lighting, bed extensions, handy stand and wheels for mobility.

Note: Distance between centres may change depending on the accessories and extensions used.



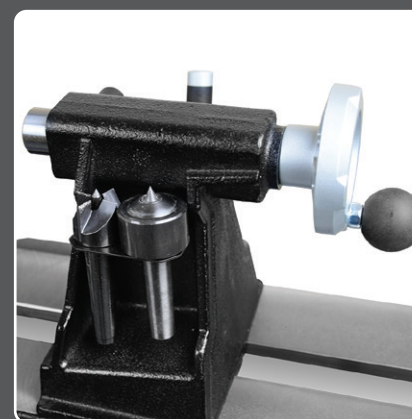
Woodturning lathe in basic equipment (without accessories)



Bed width 160 mm



Ergonomic control panel



Tailstock with storage



Easily accessible belt

Available Accessories



Expansion Set 254 mm
Code: 151-1216EXT



Adjustable Stand
Code: 151-1216STA



Mobility Kit for 1412-14BX-1216
Code: 151-1412MBA



LED Chameleon 95CRI Light
Code: 151-ALEDLATHE



LED 14S Work Light
Code: STP-LED14S



LED 3FB Work Light
Code: STP-LED3FB



Handy shelf keeps your accessories at hand



Spindle indexing in 24 points

Revo 1836 Woodturning Lathe

LAGUNA

Code: 151-1836

Supplied with:

- Stand
- Spindle Centre
- Live Centre
- Faceplate
- Toolrest
- Pads for Lights
- Knockout Rod
- Spanner for Spindle Stop

PARAMETERS

Type: **REVO 1836**

Rating: **Professional**

Power Output (230 V): **1,5 kW**

VFD: **Delta S1**

Speed: **50-3500 rpm**

Swing over Bed: **457 mm**

Distance between Centres: **914 mm**

Spindle Thread: **M33 x 3,5 mm**

Spindle Taper: **MK2 / MK2**

Headstock / Tailstock Bore: **9,5 / 9,5 mm**

Tailstock Quill Travel: **115 mm**

Toolrest Post Size: **25,4 mm (1")**

Length x Width x Height: **1524 x 660 x 1194 mm**

Weight: **194 kg**



Turning chisels



Revo 1836 Woodturning Lathe

Technical Details

Stability, quality and robustness are the main features of this machine. Designed for true specialists and woodturning professionals in small and medium-sized woodshops.

One of the striking features of the lathe is an ergonomic control panel from anodized aluminium and a designed duralumin speed control. Blue-lit speed indicator with a designed control knob sets this machine apart from the competition.

Solid bed with an impressive width of 208 mm is made of high-quality steel and is precisely ground providing smooth travel of the headstock, tailstock and toolrest. The spindle is run by a highly efficient 1,5 kW induction motor with a VFD frequency converter for high torque even at lower speeds. The speed is smoothly controlled with a duralumin knob and the gears can be changed with a clever one-lever mechanism.

The headstock, tailstock and legs of the lathe are made from cast-iron securing minimum vibration and high comfort for turning of oversized pieces. Tailstock and Headstock stops are placed on the back of the machine and will not get in the way. Ergonomically designed handles use a cam lock resulting in a firm feel with no deflection.

Note: Distance between centres may change depending on the accessories and extensions used.



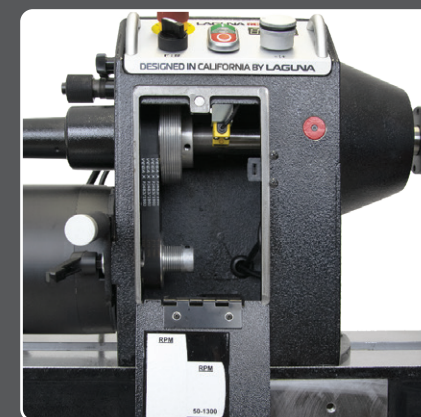
208 mm Wide Solid Steel Bed



Ergonomic Control Panel



Tailstock with a Tool Rack



Simple Speed Range Change

Available Accessories



Swing Away Extension
Code: 151-1836SE



Wheel System for Revo 1836
Code: 151-1836WK



Riser Blocks for Revo 1836-2436
Code: 151-1836RI



Bed Extension 500mm for Revo
1836-2436
Code: 151-1836EX



Comparator for Copying Revo
1836-2436
Code: 151-1836COM



LED Chameleon 95CRI Light
Code: 151-ALEDLATHE



Handy Tool Storage



Spindle Indexing

Revo 2436 Woodturning Lathe

LAGUNA

Code: 151-2436



Supplied with:

- Stand
- Spindle Centre
- Live Centre
- Faceplate
- Second control panel
- Toolrest
- Pads for Lights
- Knockout Rod
- Spanner for Spindle Stop

PARAMETERS

Type: **REVO 2436**

Rating: **Professional**

Power Output (230 V): **2,2 kW**

VFD: **Delta S1**

Speed: **50–3500 rpm**

Swing over Bed: **609 mm**

Distance between Centres: **965 mm**

Spindle Thread: **M33 × 3,5 mm**

Spindle Taper: **MK2 / MK2**

Headstock / Tailstock Bore: **9,5 / 9,5 mm**

Tailstock Quill Travel: **114 mm**

Toolrest Post Size: **25,4 mm (1")**

Length x Width x Height: **1524 × 660 × 1327 mm**

Weight: **242 kg**



Revo 2436 Woodturning Lathe

Technical Details

The Laguna REVO 2436 lathe provides all the comfort of the REVO 1836, but it has an 80% more massive ground steel bed, which ensures quiet, vibration-free operation even when turning extra large and heavy parts.

A distinctive feature of Laguna REVO lathes is the control panel made of anodized aluminum with a duralumin design speed selector. The control panel has a blue backlit indicator of the selected speed of the frequency converter, and together with a beautiful designed controller it signals that this is not an ordinary lathe.

As the only lathe in the world, it is equipped with two control panels. One is located as standard in the spindle and the other can be freely mounted in two positions on the right side of the lathe, either up on the tailstock or under the bed at the right end. The control panel on the right side not only allows you to turn the lathe on and off, but also allows you full control comfort when changing the speed of rotation and switching the direction of rotation. Improvements have also been made to the front spindle bearing, which can handle up to 30% more load than standard bearings.

Stability, quality and robustness are the main features of this machine. Designed for true specialists and woodturning professionals in small and medium-sized woodshops. One of the striking features of the lathe is an ergonomic control panel from anodized aluminium and a designed duralumin speed control. Blue-lit speed indicator with a designed control knob sets this machine apart from the competition.

Solid bed with an impressive width of 208 mm is made of high-quality steel and is precisely ground providing smooth travel of the headstock, tailstock and toolrest. The spindle is run by a highly efficient 2,2 kW induction motor with a VFD frequency converter for high torque even at lower speeds. The speed is smoothly controlled with a duralumin knob and the gears can be changed with a clever one-lever mechanism.

The headstock, tailstock and legs of the lathe are made from cast-iron securing minimum vibration and high comfort for turning of oversized pieces. Tailstock and Headstock stops are placed on the back of the machine and will not get in the way. Ergonomically designed handles use a cam lock resulting in a firm feel with no deflection.

Note: Distance between centres may change depending on the accessories and extensions used.

Comes partially assembled in a cardboard box. Assembly time is approximately 1 hour.

Available Accessories



Swing Away Extension
Code: 151-1836SE



Wheel System for Revo 2436
Code: 151-1836WK



LED Chameleon 90CRI Light
Code: 151-ALEDMACH



Bed Extension 500mm for Revo
1836-2436
Code: 151-1836EX



LED 3FB Work Light
Code: STP-LED3FB



LED Chameleon 95CRI Light
Code: 151-ALEDLATHE



208 mm Wide Solid Steel Bed



Ergonomic Control Panel



Second complete control panel with dual mounting option



Simple Speed Range Change



Spindle Indexing

C Flux 1 Cyclone Dust Collector

LAGUNA

Code: 151-CFLUX1



Supplied with:

- Remote Control
- Drum Collection Bag
- Filter Collection Bag
- Spun Bound Pleated Filter

PARAMETERS

Type: **CFlux 1**

Rating: **Professional**

Power Output (230 V): **1,1 kW**

Airflow: **1786 m³/h.**

Noise Level: **82 dB**

Drum Collection Bag: **95 l**

Filter Collection Bag: **660 mm × 620 mm**

Filter Efficiency: **99.97 % @ 1 micron**

Max. Pressure: **2514 Pa**

Inlet Diameters: **1 × 150 mm / 2 × 100 mm**

Length x Width x Height: **1092 × 610 × 1753 mm**

Weight: **125 kg**



C Flux 1 Cyclone Dust Collector

Technical Details

Powerful cyclone dust collector for large professional wood shops providing efficient extraction.

CFlux1 sets a new standard of dust extraction. The Cyclone dust extraction system maximizes airflow to increase the efficiency of suction. The CFlux1 model features a waste container that is composed of only 3 parts, increasing its strength and speeding up assembly. The container volume is 95 litres.

Efficient filter with manual cleaning

Securely affixed microfilter does not stand in the way of fluent airflow which enhances the performance of the filtration system. The CFlux1 dust extractor comes as standard with a 1-micron spun bound pleated filter of 4,46 m² providing maximum airflow efficiency. Filtration efficiency over 1 micron @ 99,97%. Handy crank cleaning system inside the filter prevents clogging and allows cleaning without having to disassemble. The lower part filtration is equipped with a collection bag for fine dust collection.

Clever waste drum design

Emptying the waste drum has never been easier. Clever lifting mechanism lifts up the bin with one pull on the lever. Lifting the handle sets down the container. Pushing the lever effectively lifts the drum and seals it against the drum lid. This lifts the container to the extractor and the whole machine is easy to move around the wood shop or used with a floor gulper. The container with a waste drum is fitted with castor wheels for easy movement. The lockable mobile wheels keep the collector firmly in place. In the waste container you will also find a LED light and a sight glass to easily see the sawdust fill level.

Cyclone system

Two-step cyclone filtration system offers far better performance than one step extractors. Larger waste is separated into the waste compartment before it reaches the second phase of filtration. This system secures constant suction and great performance of the unit.

Comes partially disassembled in a transport crate. Assembly time is approximately 4-5 hours (2 people recommended).

Available Accessories



Dust Bags, 5pc Set
Code: 151-CFLuxDB-5.v2



Spare Filter Cartridge for CFlux 1
Code: 151-CFLux1-SF



Floor Gulper Attachment 100mm
Code: 146-0012



Filter Dust Bag
Code: 151-CFLuxDB2



Transparent Extraction Hose for 100mm outlet 2,5 / 5 / 10 m
Code: FHP-100025



Other machine accessories can be found at www.igmttools.com



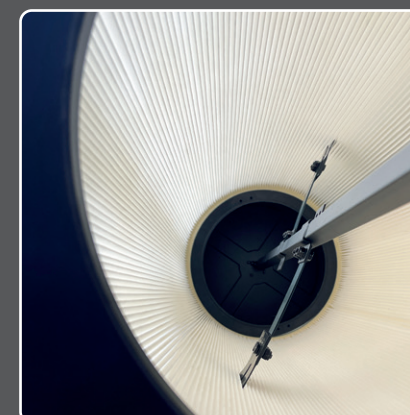
Robust metal design



Clever lift system of the waste drum



Cleaning without having to take apart



Remote Control + Control Panel

C Flux 3 Cyclone Dust Collector

LAGUNA

Code: 151-CFLUX3Tv2



Supplied with:

- Remote Control
- Drum Collection Bag
- Filter Collection Bag
- Spun Bound Pleated Filter

PARAMETERS

Type: **CFlux3Tv2**

Rating: **Professional**

Power Output (400 V): **2,2 kW**

Airflow: **3831 m³/h.**

Noise Level: **88 dB**

Drum Collection Bag: **174 l**

Filter Collection Bag: **660 mm × 620 mm**

Filter Efficiency: **99.97 % @ 1 microns**

Max. Pressure: **2800 Pa**

Inlet Diameters: **1× 200 mm / 3× 100 mm**

Length x Width x Height: **1168 × 686 × 2286 mm**

Weight: **169 kg**

Connect up to 3 Hoses

Two-Step Cyclone
Extraction Technology

Clever lift system of the waste drum

Castor Wheels on the Machine
as well as the Dust Bin

Control Panel

Cleaning without having to
take apart

Robust Metal Design

Spun Bound Pleated Filter
99.97 % @ 1 micron



Remote Control



C Flux 3 Cyclone Dust Collector

Technical Details

Powerful cyclone dust collector for large professional woodshops providing efficient extraction.

New CFlux3Tv2 range sets a new standard of dust extraction. The Cyclone dust extraction system maximizes airflow to increase the efficiency of suction. The new CFlux3Tv2 model for 2022 features an updated design, a redesigned waste container that is now composed of only 3 parts, increasing its strength and speeding up assembly. The container volume has increased by an impressive 40% to 174 litres.

Efficient filter with manual cleaning

Securely affixed microfilter does not stand in the way of fluent airflow which enhances the performance of the filtration system. The CFlux3Tv2 dust extractor comes as standard with a 1-micron spun bound pleated filter of 4,5 m2 providing maximum airflow efficiency. Filtration efficiency of 99,97% @ 1 micron. Handy crank cleaning system inside the filter prevents clogging and allows cleaning without having to disassemble. The lower part filtration is equipped with a collection bag for fine dust collection.

Clever waste drum design

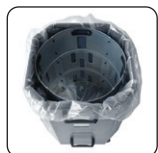
Emptying the waste drum has never been easier. Clever lifting mechanism lifts up the bin with one pull on the lever. Lifting the handle sets down the container. Pushing the lever effectively lifts the drum and seals it against the drum lid. This lifts the container to the extractor and the whole machine is easy to move around the woodshop or used with a floor gulper. The container with a waste drum is fitted with castor wheels for easy movement. The collector's mobile wheels are now also braked, to keep the collector firmly in place. In the waste container you will now also find an LED light and a sight glass to easily see the sawdust fill level.

Cyclone system

Two-step cyclone filtration system offers far better performance than one step extractors. Larger waste is separated into the waste compartment before it reaches the second phase of filtration. This system secures constant suction and great performance of the unit.

Comes partially disassembled in a transport crate. Assembly time is approximately 4-5 hours (2 people recommended).

Available Accessories



Dust Bags, 5pc Set
Code: 151-CFLuxDB-5.v2



Spare Filter Cartridge for CFlux 3
Code: 151-CFLuxSF



Floor Gulper Attachment 100mm
Code: 146-0012



Filter Dust Bag
Code: 151-CFLuxDB2



Transparent Extraction Hose for 100mm outlet 2,5 / 5 / 10 m
Code: FHP-100025



Other machine accessories
can be found at www.igmttools.com



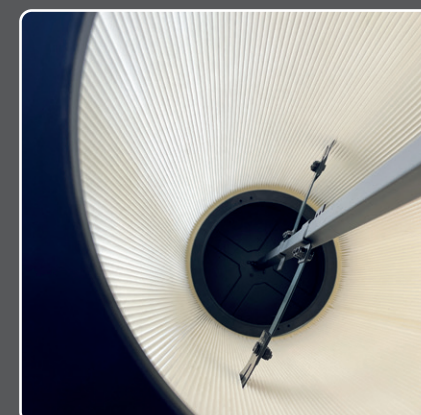
Robust metal design



Multiple Hose Connection



Clever lift system of the waste drum



Cleaning without having to take apart



Remote Control + Control Panel

P Flux 1 Cyclone Dust Collector

LAGUNA

Code: 151-PFLUX1



Supplied with:

- Remote Control
- Drum Collection Bag
- HEPA Filter

PARAMETERS

Type: **PFlux1**

Rating: **Professional**

Power Output (400 V): **1,1 kW**

Airflow: **1786 m³/h.**

Noise Level: **70 dB**

Drum Collection Bag: **95 l**

Filter Collection Bag: **1090 × 810 mm**

Filter Efficiency: **2514 Pa**

Max. Pressure: **99.2 % @ 0,4 microns**

Inlet Diameters: **1 × 150 mm / 2 × 100 mm**

Length x Width x Height: **1168 x 610 x 1753 mm**

Weight: **122 kg**

Connect up to 2 Hoses

Two-Step Cyclone
Extraction Technology

Clever lift system of the waste drum

Castor Wheels on the Machine
as well as the Dust Bin

Control Panel with LED Indicator Lights

Automatic Filter Cleaning System

Sound Dampening
Wings for High Comfort

HEPA Filter
99,2 % @ 0,4 microns



Remote Control

P Flux 1 Cyclone Dust Collector

Technical Details

PFlux1 is a high-performance cyclone extractor from the IGM Laguna Flux range, guaranteeing unrivalled extraction performance, high comfort and maximum extraction efficiency. The high-efficiency HEPA filter is equipped with a separate motor for automatic filter cleaning that starts every 10 seconds, ensuring maximum comfort and always high performance without loss. Cleaning can also be started manually by pressing a button on the machine's control panel. Wings protecting the filter are fitted with sound dampening foam that effectively reduces noise.

What is a HEPA filter and how it works

The HEPA is a highly efficient particle filter with a 99,2 % filtration @ 0,4 microns. Regular filters are usually able to filter only 1-2 microns. The filter is made from fiberglass and is folded multiple times to improve filtration. The securely affixed microfilter does not stand in the way of fluent airflow which enhances the performance of the filtration system. If the filter were only one layer, the efficiency would be zero. The folded design allows it to contain the smallest dust particles and thus filter the air in your wood shop. PFlux1 is fitted with a clogging indicator signalled by a LED light on the control panel. You can create a vacuum in the HEPA by connecting the main container with the microfiltration cap using a hose, this technique cleans the insides of the machine. Make your maintenance more efficient by blowing out the filter from the outside.

Clever waste drum design

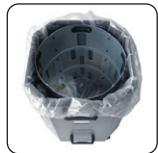
Emptying the waste drum has never been easier. Clever lifting mechanism lifts up the bin with one pull on the lever. Lifting the handle sets down the container. Pushing the lever effectively lifts the drum and seals it against the drum lid. This lifts the container to the extractor and the whole machine is easy to move around the wood shop or used with a floor gulper. The container with a waste drum is fitted with castor wheels for easy movement.

Cyclone system

Two-step cyclone filtration system offers far better performance than one step extractors. Larger waste is separated into the waste compartment before it reaches the second phase of filtration. This system secures constant suction and great performance of the unit.

Comes partially disassembled in a cardboard box. Assembly time is approximately 4-5 hours (2 people recommended).

Available Accessories



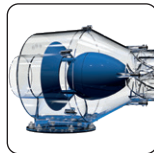
Dust Bags, 5pc Set
Code: 151-CFLuxDB-5.v2



Spare HEPA Filter Cartridge for PFlux 1
Code: 151-PFlux1-SF



Floor Gulper Attachment 100mm
Code: 146-0012



Dust Separator
Code: STO-P100



Transparent Extraction Hose for 100mm outlet 2,5 / 5 / 10 m
Code: FHP-100025



Other machine accessories can be found at www.igmtools.com



Sound Dampening Wings for High Comfort



HEPA Filter with filtration of 99,2 % @ 0,4 microns.



Clever lift system of the waste drum



Automatic Filter Cleaning System



Cleaning without having to take apart



Remote Control + Control Panel with LED Indicators

P Flux 3 Cyclone Dust Collector

Code: 151-PFLUX3Tv2



Supplied with:

- Remote Control
- Drum Collection Bag
- HEPA Filter

PARAMETERS

Type: **PFlux3Tv2**

Rating: **Professional**

Power Output (400 V): **2,2 kW**

Airflow: **3831 m³/h.**

Noise Level: **76 dB**

Drum Collection Bag: **174 l**

Filter Collection Bag: **1194 × 960 mm**

Filter Efficiency: **2800 Pa**

Max. Pressure: **99.2 % @ 0,4 microns**

Inlet Diameters: **1 × 200 mm / 3 × 100 mm**

Length x Width x Height: **1168 × 686 × 2286 mm**

Weight: **175 kg**

Connect up to 3 Hoses

Two-Step Cyclone
Extraction Technology

Clever lift system of the waste drum

Castor Wheels on the Machine
as well as the Dust Bin

Control Panel with LED Indicator Lights

Automatic
Vacuum Filter Cleaning

Sound Dampening
Wings for High Comfort

HEPA Filter
99,2 % @ 0,4 microns



Remote Control



P Flux 3 Cyclone Dust Collector

Technical Details

The PFlux 3 is the most efficient extractor in the IGM Laguna Flux range providing unbeatable suction, high comfort and maximum extraction guarantee. Comes fitted with a HEPA filter. Wings protecting the filter are fitted with sound dampening foam that effectively reduces noise.

What is a HEPA filter and how it works

The HEPA is a highly efficient particle filter with a 99,2 % filtration @ 0,4 microns. Regular filters are usually able to filter only 1-2 microns. The filter is made from fibreglass and is folded multiple times to improve filtration. The securely affixed microfilter does not stand in the way of fluent airflow which enhances the performance of the filtration system. If the filter were only one layer, the efficiency would be zero. The folded design allows it to contain the smallest dust particles and thus filters the air in your woodshop. PFlux 3 is fitted with a clogging indicator signalled by a LED light of the control panel. You can create a vacuum in the HEPA by connecting the main container with the microfiltration cap using a hose, this technique cleans the insides of the machine. Make your maintenance more efficient blowing out the filter from the outside during cleaning.

Clever waste drum design

Emptying the waste drum has never been easier. Clever lifting mechanism lifts up the bin with one pull on the lever. Lifting the handle sets down the container. Pushing the lever effectively lifts the drum and seals it against the drum lid. This lifts the container to the extractor and the whole machine is easy to move around a woodshop or used with a floor gulper. The container with a waste drum is fitted with castor wheels for easy movement. Connecting the container to the extractor creates a vacuum on the bottom of the drum. This vacuum holds the bag in the drum and prevents it from being sucked into the cone. No other cyclone or dust machine has such a smart system. Should you decide to use the extractor without a bag, you can easily turn off the vacuum system using only a couple of screws.

Cyclone system

Two-step cyclone filtration system offers far better performance than one step extractors. Larger waste is separated into the waste compartment before it reaches the second phase of filtration. This system secures constant suction and great performance of the unit.

Comes partially disassembled in a cardboard box. Assembly time is approximately 4-5 hours.

Available Accessories



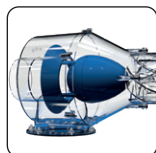
Dust Bags, 5pc Set
Code: 151-CFLuxDB-5.v2



Spare HEPA Filter Cartridge for PFlux 3
Code: 151-PFluxSF



Floor Gulper Attachment 100mm
Code: 146-0012



Dust Separator
Code: STO-P100



Transparent Extraction Hose for 100mm outlet 2,5 / 5 / 10 m
Code: FHP-100025



Other machine accessories can be found at www.igmtools.com



Robust metal design



Multiple Hose Connection



Clever lift system of the waste drum



Automatic Filter Cleaning System



Cleaning without having to take apart



Remote Control + Control Panel with LED Indicators

B Flux 1 Dust Collector

LAGUNA

Code: 151-BFLUX1



Supplied with:

- Filter
- 2 × plastic waste bag

PARAMETERS

Type: **BFlux1**

Rating: **Trade**

Power Output (230 V): **750 W**

Airflow: **884 m³/h**

Noise Level: **76 dB**

Collection Bag Size: **600 × 900 mm**

Filter Efficiency: **99.97 % @ 1 micron**

Inlet Diameter: **100 mm**

Max. Pressure: **1215 Pa**

Length x Width x Height: **737 × 381 × 1270 mm**

Weight: **32 kg**

Handy filter cleaning crank system

Spun Bound Pleated Filter
99.97 % @ 1 micron

Dust Outlet that you can point downwards or upwards

Powerful Motor with a Metal Fan

Patented Snap-Band for a quick bag change



B Flux 1 Dust Collector

Technical Details

Unique, compact and portable extractor ideal for a saw or sander. Ideal for smaller woodshops. Sleek design and power to match.

No more fumbling with a steel band to mount your lower bag, the BFlux comes with a patented Snap-Band that makes changing the bag a breeze. Unlike most similar units the BFlux feels solid and has a low dB rating. The machine comes equipped with a 100 mm dust outlet that you can point downwards or upwards. The hose can then be fitted from the top or bottom.

The BFlux 1 dust extractor comes as standard with a 1 micron spun bound pleated filter of 1,6 m² providing maximum airflow efficiency. Filtration efficiency of 99,97% @ 1 micron. Handy crank cleaning system inside the filter prevents clogging and allows cleaning without having to disassemble. It also prevents clogging of the filter.

Supplied in a cardboard box partially assembled. Assembly time is approximately 1 hour.

Available Accessories



Spare Filter Cartridge for BFlux 1
Code: 151-BFluxSF



Floor Gulper Attachment 100mm
Code: 146-0012



Double Quick Release 100mm Hose Fixing Clip, 2pcs
Code: 146-0015



Dust Bags for BFlux 1, 5pc Set
Code: 151-BFluxDB-5



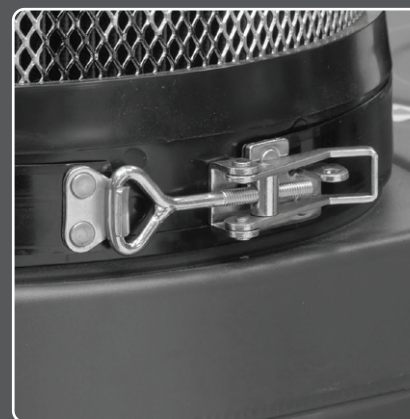
Transparent Extraction Hose for 100mm outlet 2,5 / 5 / 10 m
Code: FHP-100025



Other machine accessories can be found at www.igmttools.com



Solid but Light Build



Simple Filter Grasp



Upward or Downward Inlet Option



Control Panel



Wheels to Move Around

A Flux Air Filtration System **LAGUNA**

Code: 151-AFLUX12



Supplied with:

- 4 Screws for Ceiling Mounting
- 4 Rubber Legs
- Outer Washable Electrostatic Filter
- Inner Filter
- Remote Control (2x AAA batteries included)

PARAMETERS

Type: **AFlux**

Rating: **Professional**

Power Output (230 V): **150 W**

Max. Airflow: **917, 1240, 2038 m³/h.**

Outer Filter: **5 microns**

Inner Filter: **1 micron**

Timer: **YES**

Timer Settings: **1, 2, and 4 hours**

Remote Control: **YES**

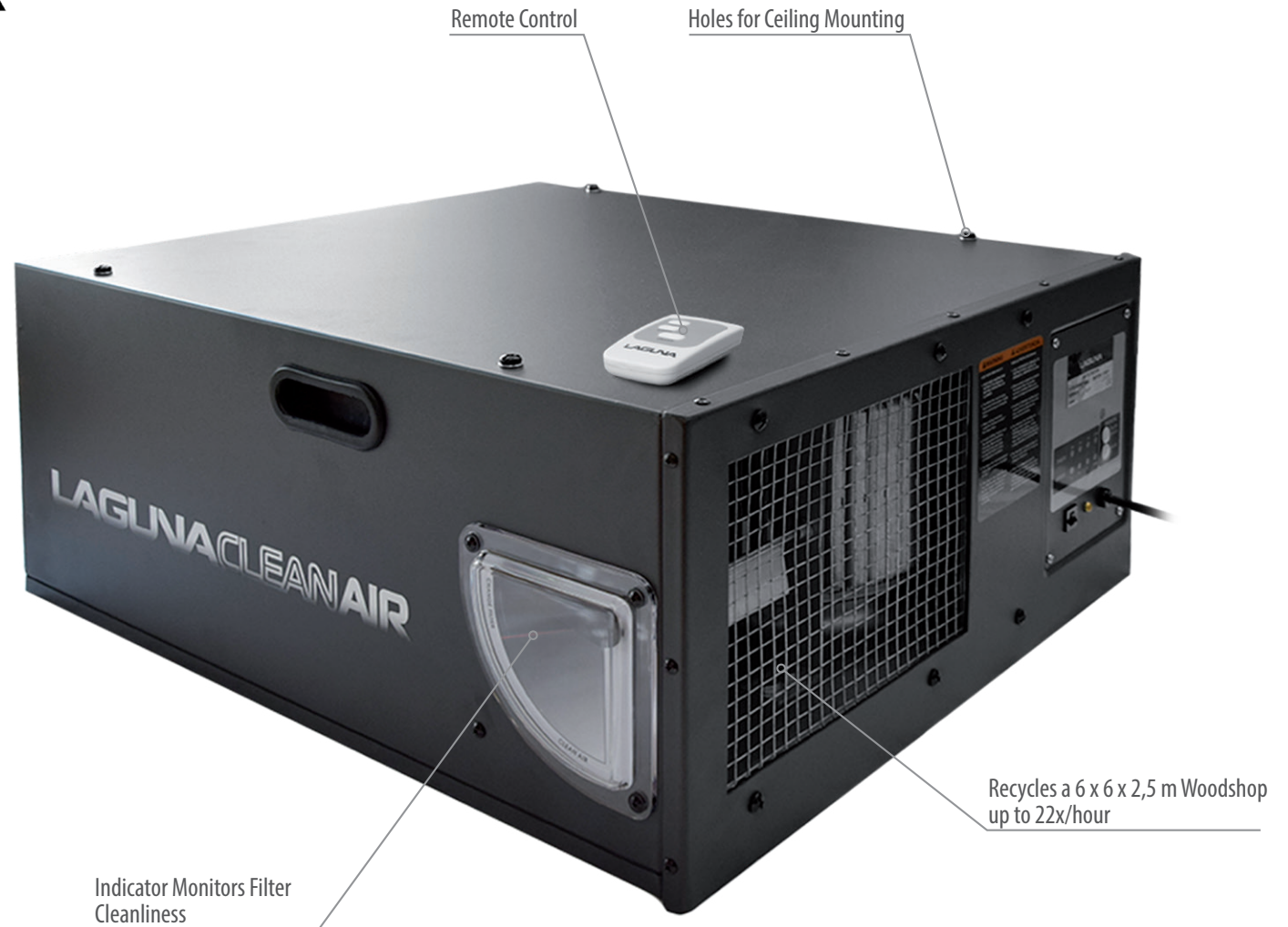
Noise (high speed): **59,6 dB**

Noise (medium speed): **56,1 dB**

Noise (low speed): **55,6 dB**

Length x Width x Height: **712 x 610 x 305 mm**

Weight: **25 kg**



A Flux Air Filtration System

Technical Details

Designed for efficient filtration of dust particles in larger woodshops. This Air Filtration Unit is designed to recycle all of the air in a 6 x 6 x 2,5 m space up to 22 times per hour at its highest speed.

Supplied with an outer washable electrostatic filter with an inner filter that captures all particles larger than 1 micron ensuring clean air output.

The unit is equipped with a 150 W motor delivering a class-leading airflow of 917 / 1240 / 2038 m³ per hour. Timer settings from 1/2, 2 to 4 hours allow the user to set the unit with confidence that, while they are away, the unit will clean the air in the shop and then turn itself off.

Supplied assembled in a cardboard box.

Make sure to remove the polystyrene padding from inside the unit before use. The padding is there to prevent damage during transport.

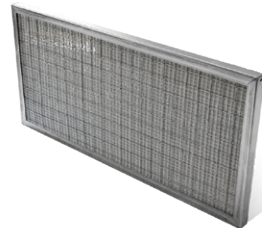
Available Accessories

Replaceable Inner Filter



Code: 151-AFluxIF

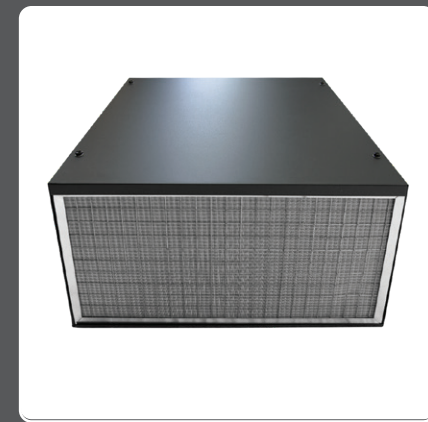
Electrostatic Outer Filter



Code: 151-AFluxOF



Clean Air Outlet



Outer Filter



Filter Cleanliness Indicator



Control Panel



Remote Control



Outer and Inner Filter

SAW BLADES

How to select the proper saw blade?

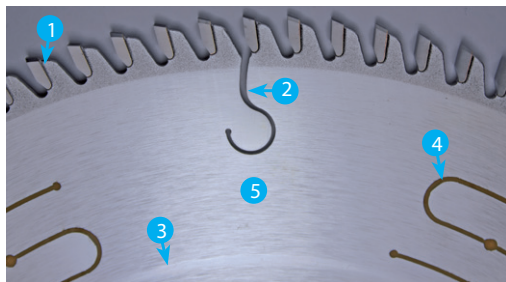
What to look for

- Features and quality of the body
- Material and protective coating

You should pay attention to the appearance and quality of the body. This is a main distinguishing factor and can help you to tell apart a high-quality blade from a low-quality one that will last for a limited time only. The body itself along with the finish can tell you a lot. **As a rule, an ordinary blade usually has a coarser body, lacks surface treatment and is made from a single sheet of metal, this may lead to swaying or curling of the blade.**

Top of the line CMT saw blades are made of German **high-strength tool steel** (42-48 HRC), laser-cut with **maximum precision**. Additionally covered with **protective layers**, either chrome, orange Teflon or protective coating. The saw blade is then perfectly protected from damage, corrosion and is easy to clean. The quality difference is visible in the picture. You can clearly see the difference between a regular saw blade and a CMT blade.

Distinguishing an ordinary saw blade from a high-quality one is not something difficult:



- 1) Three-layer brazing
- 2) Expansion slot
- 3) Tensioning ring
- 4) Sound dampening channel
- 5) Chrome coating



Full article at www.igmtools.com



ORANGE CHROME

Designed for professional woodworkers who require high precision and durability from their saw blades. Special chrome carbide reduces tooth abrasion, whereas the chrome plated body protects against rust, corrosion and guarantees long-lasting performance.



INDUSTRIAL / XTREME

Designed for fine woodworkers, finish carpenters, construction and industrial users who run their blades all day long demanding ultimate precision and extended life, while conquering the most challenging applications.



ITK PLUS

Designed for the professional contractor and remodeler, CMT's ITK Plus® delivers a clean, fast, effortless cut through wood and wood composite material. The features of the ITK Plus® line offer great price-performance balance which means greater value.



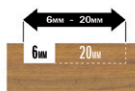
CMT CONTRACTOR PLUS

Designed for the contractor and remodeler CMT's Contractor® thin-kerf blade line delivers solid performance at a very economical price. Ideal for any construction projects that require cutting wood and wood composite material.

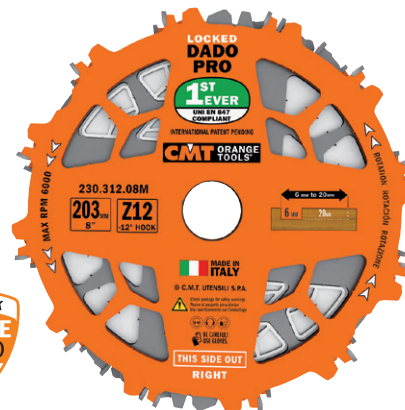


CMT Grooving Saw Blade Set DADO PRO

CMT is proud to introduce a brand new Locked Dado Pro Set unlike any other! This is the very first Dado ever deemed UNI EN847 compliant. This means that while the Dado is rotating, the assembled elements will never come into contact with each other! This is possible thanks to unique blade body design and 'never before seen' special "lock spacers".



- For flat bottom grooves & virtually splinter-free cuts in solid wood, laminates & melamines, veneer plywood.
- Orange Shield Coating protect from heat, gumming and corrosion.
- Includes shims (plastic & magnetic) and plastic "lock spacers" set for micro-thin adjustability.



Code: C23031208



TURNING CHISELS



IGM Chisel Start Set Cryo HSS 3 pcs

Code: RSS-CR3



IGM Chisel Set Cryo HSS 6 pcs

Code: RSS-CR6



IGM Chisel Set With Replaceable carbide tips HW 3 pcs

Code: RSS-RCT3



IGM Chisel Set With Replaceable carbide tips HW 4 pcs

Code: RSS-RCT4



IGM Woodturning Hollower HW Chrome Straight

Code: RSS-CCT1



IGM Woodturning Hollower HW Chrome Shallow Swan Neck

Code: RSS-CCT2



IGM Woodturning Hollower HW Chrome Deep Swan Neck

Code: RSS-CCT3

Accessories



BANDSAW BLADES

Choosing the Right Blade for Your Bandsaw

It is generally advisable to reserve specific blades for specific tasks. The way the blade is being used and the types of cuts it makes affect its shape over time – that is why for instance thin blades used for cutting curves are not suitable for making cuts of straight parts.

Blade width (Y)	Minimal radius (X)
25 mm	175 mm
20 mm	140 mm
16 mm	100 mm
13 mm	65 mm
10 mm	40 mm
8 mm	25 mm
6 mm	15 mm
3 mm	3 mm

Tooth Pitch or TPI

Coarse tooth (tpi 2, tpi 3 and tpi 4)

It is used for deep cuts and quick rough wood splits. It is suitable for cutting longitudinal, soft and raw (green) lumber.

Middle tooth (tpi 4, tpi 6 and tpi 8)

It is used for normal cutting and is the most commonly used tooth size. Used for longitudinal and transverse cuts, it offers the best ratio between speed and cut clarity.

Fine tooth (tpi 10 and tpi 14)

It is used for fine cutting and where high cut purity is required. It is most often used for cutting plywood or board material up to 10 mm height.

TPI designation	Distance between peaks in mm
2 TPI	13 mm
3 TPI	8,5 mm
4 TPI	6 mm
6 TPI	4 mm
8 TPI	3 mm
10 TPI	2,5 mm
14 TPI	1,8 mm

Note:
TPI stands for "Teeth Per Inch". The higher the TPI, the smaller the pitch. So logically, higher TPI is to be used for fine and precise work on thinner workpieces while low TPI is fit for deeper cuts or swift and coarse cutting of raw material.



Full article at
www.igmtools.com



IGM Carbide RESAWKING



- Ideal for: exotic, hardwood/softwood
- Height of cut: 0-200 mm

Ideal blade for the most demanding conditions, suited for deep cuts and quick material splits with minimal burr.

Bandsaw blade with carbide teeth. Maximum blade durability, perfect for cutting hard exotic wood. Thin kerf of only 1.2 mm. Variable tooth pitch limits blade vibration. Noticeably cleaner cut compared to regular tooth set.

IGM Carbon FORCE SKIP



- Tooth shape: Skip
- Ideal for: softwood
- Height of cut: 20-80 mm

Ideal for rough splitting and quick cuts.

Excellent cutting performance along with unrivalled wear resistance thanks to hard quenched teeth.

IGM Carbon FORCE REGULAR



- Tooth shape: Regular
- Ideal for: hardwood/softwood
- Height of cut: 3-20 mm

Ideal for smooth and clean cut, not suited for longitudinal material splits.

Excellent cutting performance along with unrivalled wear resistance thanks to hard quenched teeth.

IGM Carbon FORCE HOOK



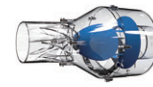
- Tooth shape: Hook
- Ideal for: hardwood/softwood
- Height of cut: 40-200 mm

Ideal blade for deep cuts and quick rough wood splits.

Excellent cutting performance along with unrivalled wear resistance thanks to hard quenched teeth.



DUST & CHIP COLLECTORS ACCESSORIES



IGM STO-P100 Dust Separator

Code: STO-P100



IGM Rubber Cuff for Hose 100mm

Code: 146-0024



IGM Stainless Hose Hangers for Hose 100 mm, Set 5 pc

Code: 146-0011



IGM Flexible Rubber Cuffs 100 mm

Code: 146-0014



IGM Redukční multi-koncovka pro průměry 25-150mm

Code: 121-JW1039



IGM Multiple Stepped Hose Adaptor for Diameters 25-150 mm

Code: 121-JW1019



IGM Hose Cuff for Extraction Hose 100 mm

Code: 121-JW1047



IGM Elbow 45° for Extraction Hose 100 mm

Code: 146-0013



IGM Elbow 90° for Extraction Hose 100 mm

Code: 121-JW1017



IGM Dust Collection Swivel Fitting 360° for Hose 100 mm

Code: 146-0010



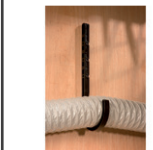
IGM Y-Junction for Extraction Hose 100 mm

Code: 121-JW1015



GM Alu Blast Gate for Extraction Hose 100 mm

Code: 121-JW1142



IGM Plastic Hose Hook for Hose 100mm

Code: 146-0023



IGM Mounting and Earthing Kit 12 m

Code: 121-JW1053



IGM Tools and Machinery is the exclusive distributor of Laguna machines in EU, Norway and Switzerland with a central warehouse on the outskirts of Prague.

We cooperate with more than 100 dealers throughout Europe.

IGM[®]

Tools & Machinery

Importer and Distributor for the EU

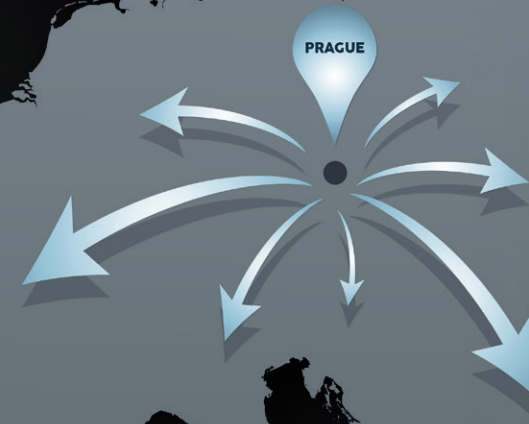
LAGUNA



**AUTHORIZED
DEALERS
MAP**

IGMTOOLS.COM/DEALER-LOCATOR/

Cooperate with us and expand the range of your machinery by adding Laguna Tools by IGM to your offer. Contact us at e-mail: sales@igmtools.com





Tools & Machinery

Importer and Distributor for the EU

LAGUNA

Local Dealer:



laguna.igmtool.com

This document is for personal use only. All other uses, reproductions and copying are prohibited without the prior written consent of IGM nástroje a stroje s. r. o.

IGM is a registered trademark of IGM nástroje a stroje s. r. o.

IGM nástroje a stroje s. r. o., Ke Kopanině 560, Tuchoměřice, Postcode: 252 67, Czech Republic, ID 25114727, VAT ID CZ25114727.

© 2022 IGM nástroje a stroje s. r. o.

SKU: F000-90142-EN

